

Discharge Measurement Summary

Site name ECanal5
Site number 02
Operator(s) VAllen
File name EastCanal_20230518_1431.ft
Comment

Start time	5/18/2023 2:31 PM	Sensor type	Top Setting
End time	5/18/2023 3:20 PM	Handheld serial number	FT2H2219029
Start location latitude	42.809	Probe serial number	FT2P2219014
Start location longitude	-118.869	Probe firmware	1.30
Calculations engine	FlowTracker2	Handheld software	1.7

# Stations	Avg interval (s)	Total discharge (m³/s)
22	40	1.1788

Total width (m)	Total area (m²)	Wetted Perimeter (m)
3.993	1.84357	4.604

Mean SNR (dB)	Mean depth (m)	Mean velocity (m/s)
48	0.462	0.6394

Mean temp (°C)	Max depth (m)	Max velocity (m/s)
11.241	0.558	0.9242

Discharge Uncertainty		
Category	ISO	IVE
Accuracy	1.0%	1.0%
Depth	0.1%	1.5%
Velocity	0.3%	1.5%
Width	0.1%	0.1%
Method	1.4%	
# Stations	2.3%	
Overall	2.9%	2.3%

Discharge equation	Mid Section
Discharge uncertainty	IVE
Discharge reference	Rated

Data Collection Settings	
Salinity	0.000 PSS-78
Temperature	-
Sound speed	-
Mounting correction	0.000 %

Summary overview

No changes were made to this file
Quality control warnings



Discharge Measurement Summary

Site name ECanal5
Site number 02
Operator(s) VAllen
File name EastCanal_20230518_1431.ft
Comment

Station Warning Settings

Station discharge OK

Station discharge < 5.00%

Station discharge caution

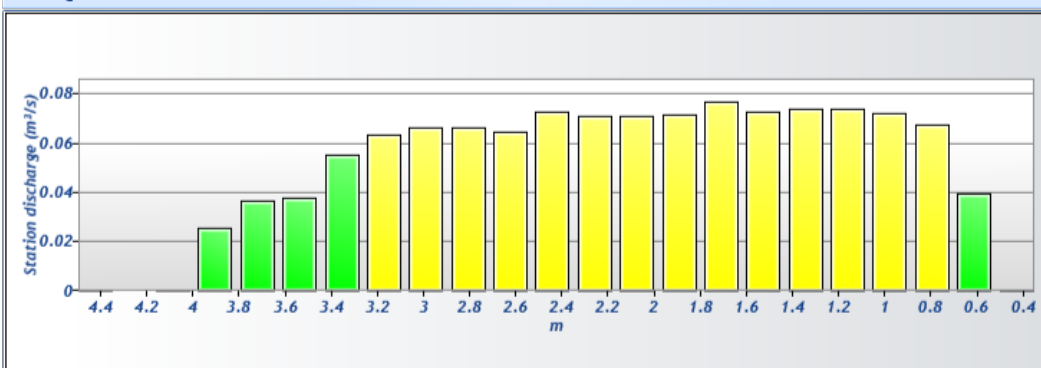
5.00% >= Station discharge < 10.00%

Station discharge warning

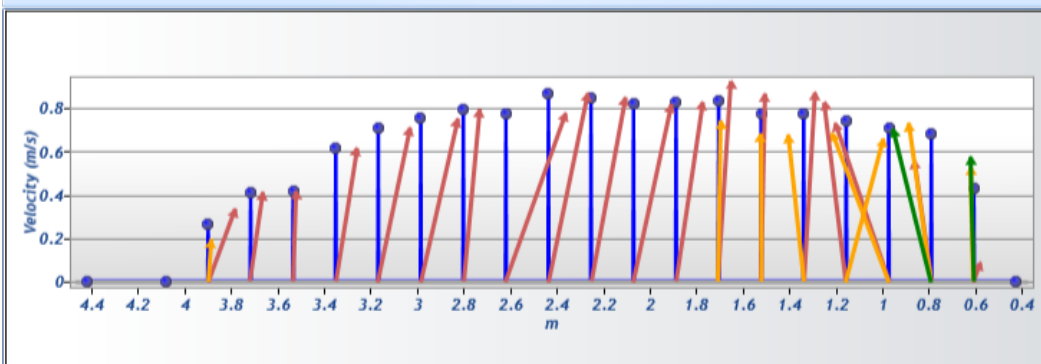
Station discharge >= 10.00%



Discharge chart

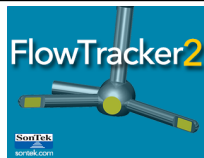


Velocity chart



Depth chart

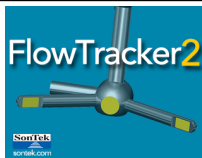




Discharge Measurement Summary

Site name ECanal5
Site number 02
Operator(s) VAllen
File name EastCanal_20230518_1431.ft
Comment

Measurement results													
St#	Time	Location (m)	Method	Depth (m)	%Depth	Measured Depth (m)	Samples	Velocity (m/s)	Correcti on	Mean Velocity (m/s)	Area (m²)	Flow (m³/s)	%Q
0	2:31 PM	0.427	None	0.000	0.0000	0.000	0	0.0000	1.0000	0.4300	0.00000	0.0000	0.00 ✓
1	2:32 PM	0.610	0.2/0.6/0.8	0.503	0.2000	0.101	80	0.0888	1.0000	0.4300	0.09197	0.0396	3.36 ✓
1	2:32 PM	0.610	0.2/0.6/0.8	0.503	0.6000	0.302	80	0.5276	1.0000	0.4300	0.09197	0.0396	3.36 ✓
1	2:32 PM	0.610	0.2/0.6/0.8	0.503	0.8000	0.402	80	0.5761	1.0000	0.4300	0.09197	0.0396	3.36 ✓
2	2:38 PM	0.792	0.2/0.6/0.8	0.543	0.2000	0.109	80	0.5577	1.0000	0.6812	0.09922	0.0676	5.73 ✓
2	2:38 PM	0.792	0.2/0.6/0.8	0.543	0.6000	0.326	80	0.7320	1.0000	0.6812	0.09922	0.0676	5.73 ✓
2	2:38 PM	0.792	0.2/0.6/0.8	0.543	0.8000	0.434	80	0.7029	1.0000	0.6812	0.09922	0.0676	5.73 ✓
3	2:42 PM	0.975	0.2/0.8	0.558	0.2000	0.112	80	0.7296	1.0000	0.7062	0.10201	0.0720	6.11 ✓
3	2:42 PM	0.975	0.2/0.8	0.558	0.8000	0.446	80	0.6828	1.0000	0.7062	0.10201	0.0720	6.11 ✓
4	2:45 PM	1.158	0.2/0.8	0.543	0.2000	0.109	80	0.8263	1.0000	0.7428	0.09922	0.0737	6.25 ✓
4	2:45 PM	1.158	0.2/0.8	0.543	0.8000	0.434	80	0.6592	1.0000	0.7428	0.09922	0.0737	6.25 ✓
5	2:50 PM	1.341	0.2/0.8	0.524	0.2000	0.105	79	0.8709	1.0000	0.7747	0.09588	0.0743	6.30 ✓
5	2:50 PM	1.341	0.2/0.8	0.524	0.8000	0.419	80	0.6784	1.0000	0.7747	0.09588	0.0743	6.30 ✓
6	2:54 PM	1.524	0.2/0.8	0.512	0.2000	0.102	80	0.8669	1.0000	0.7750	0.09365	0.0726	6.16 ✓
6	2:54 PM	1.524	0.2/0.8	0.512	0.8000	0.410	80	0.6832	1.0000	0.7750	0.09365	0.0726	6.16 ✓
7	2:57 PM	1.707	0.2/0.8	0.503	0.2000	0.101	80	0.9242	1.0000	0.8337	0.09197	0.0767	6.50 ✓
7	2:57 PM	1.707	0.2/0.8	0.503	0.8000	0.402	80	0.7431	1.0000	0.8337	0.09197	0.0767	6.50 ✓
8	3:00 PM	1.890	0.6	0.475	0.6000	0.285	80	0.8268	1.0000	0.8268	0.08696	0.0719	6.10 ✓
9	3:02 PM	2.073	0.6	0.475	0.6000	0.285	80	0.8192	1.0000	0.8192	0.08696	0.0712	6.04 ✓
10	3:04 PM	2.256	0.6	0.457	0.6000	0.274	80	0.8500	1.0000	0.8500	0.08361	0.0711	6.03 ✓
11	3:05 PM	2.438	0.6	0.457	0.6000	0.274	80	0.8680	1.0000	0.8680	0.08361	0.0726	6.16 ✓
12	3:06 PM	2.621	0.6	0.454	0.6000	0.272	80	0.7759	1.0000	0.7759	0.08306	0.0644	5.47 ✓
13	3:08 PM	2.804	0.6	0.457	0.6000	0.274	80	0.7956	1.0000	0.7956	0.08361	0.0665	5.64 ✓
14	3:09 PM	2.987	0.6	0.482	0.6000	0.289	80	0.7524	1.0000	0.7524	0.08807	0.0663	5.62 ✓
15	3:10 PM	3.170	0.6	0.488	0.6000	0.293	80	0.7098	1.0000	0.7098	0.08919	0.0633	5.37 ✓
16	3:12 PM	3.353	0.6	0.494	0.6000	0.296	80	0.6151	1.0000	0.6151	0.09030	0.0555	4.71 ✓
17	3:13 PM	3.536	0.6	0.494	0.6000	0.296	80	0.4164	1.0000	0.4164	0.09030	0.0376	3.19 ✓
18	3:15 PM	3.719	0.6	0.488	0.6000	0.293	80	0.4105	1.0000	0.4105	0.08919	0.0366	3.11 ✓
19	3:16 PM	3.901	0.2/0.8	0.518	0.2000	0.104	80	0.3386	1.0000	0.2673	0.09476	0.0253	2.15 ✓
19	3:16 PM	3.901	0.2/0.8	0.518	0.8000	0.415	80	0.1960	1.0000	0.2673	0.09476	0.0253	2.15 ✓
20	3:19 PM	4.084	0.6	0.463	0.6000	0.278	80	0.0002	1.0000	0.0002	0.12003	0.0000	0.00 ✓
21	3:20 PM	4.420	None	0.000	0.0000	0.000	0	0.0000	1.0000	0.0002	0.00000	0.0000	0.00 ✓



Discharge Measurement Summary

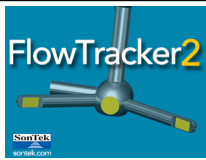
Site name ECanal5
Site number 02
Operator(s) VAllen
File name EastCanal_20230518_1431.ft
Comment

Quality Control Settings

Maximum depth change 50.00%
Maximum spacing change 100.00%
SNR threshold 10 dB
Standard error threshold 0.0100 m/s
Spike threshold 10.00%
Maximum velocity angle 20.0 deg
Maximum tilt angle 5.0 deg

Quality control warnings

St#	Time	Location (m)	Method	Depth (m)	%Depth	Measured Depth (m)	Warnings
1	2:32 PM	0.610	0.2/0.6/0.8	0.503	0.2000	0.101	Water Depth > QC,Standard Error > QC
1	2:32 PM	0.610	0.2/0.6/0.8	0.503	0.6000	0.302	Water Depth > QC,Standard Error > QC
1	2:32 PM	0.610	0.2/0.6/0.8	0.503	0.8000	0.402	Water Depth > QC,Standard Error > QC
2	2:38 PM	0.792	0.2/0.6/0.8	0.543	0.2000	0.109	Standard Error > QC
2	2:38 PM	0.792	0.2/0.6/0.8	0.543	0.6000	0.326	Standard Error > QC
2	2:38 PM	0.792	0.2/0.6/0.8	0.543	0.8000	0.434	Standard Error > QC
3	2:42 PM	0.975	0.2/0.8	0.558	0.2000	0.112	Standard Error > QC
3	2:42 PM	0.975	0.2/0.8	0.558	0.8000	0.446	Standard Error > QC
4	2:45 PM	1.158	0.2/0.8	0.543	0.2000	0.109	Standard Error > QC
4	2:45 PM	1.158	0.2/0.8	0.543	0.8000	0.434	Standard Error > QC
5	2:50 PM	1.341	0.2/0.8	0.524	0.2000	0.105	Standard Error > QC
5	2:50 PM	1.341	0.2/0.8	0.524	0.8000	0.419	Standard Error > QC
6	2:54 PM	1.524	0.2/0.8	0.512	0.2000	0.102	Standard Error > QC
6	2:54 PM	1.524	0.2/0.8	0.512	0.8000	0.410	Standard Error > QC
7	2:57 PM	1.707	0.2/0.8	0.503	0.2000	0.101	Standard Error > QC
7	2:57 PM	1.707	0.2/0.8	0.503	0.8000	0.402	Standard Error > QC
18	3:15 PM	3.719	0.6	0.488	0.6000	0.293	Standard Error > QC
19	3:16 PM	3.901	0.2/0.8	0.518	0.2000	0.104	Standard Error > QC
19	3:16 PM	3.901	0.2/0.8	0.518	0.8000	0.415	Standard Error > QC
20	3:19 PM	4.084	0.6	0.463	0.6000	0.278	Beam SNRs Not Similar, Large SNR Variation, High % Spikes
21	3:20 PM	4.420	None	0.000	0.0000	0.000	Water Depth > QC



Discharge Measurement Summary

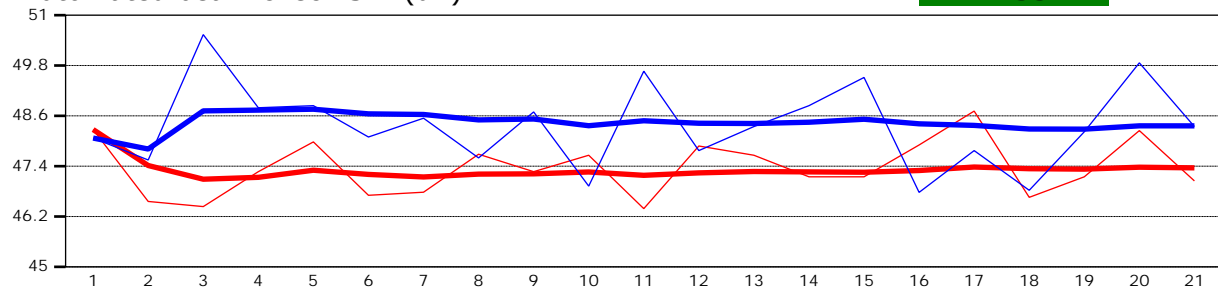
Site name ECanal5
Site number 02
Operator(s) VAllen
File name EastCanal_20230518_1431.ft
Comment

Beam 1	
Beam 2	

Automated beam check Start time 5/18/2023 2:31:05 PM

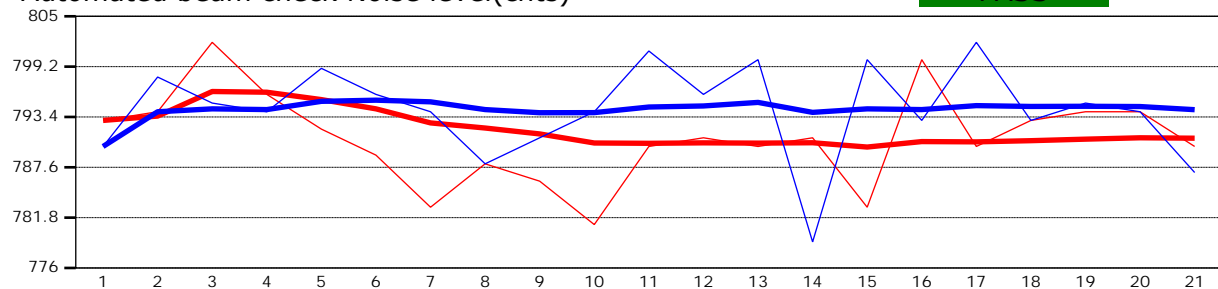
Automated beam check SNR(dB)

PASS



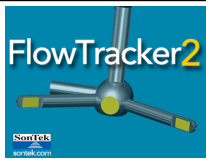
Automated beam check Noise level(cnts)

PASS



Automated beam check Quality control warnings

No quality control warnings



Discharge Measurement Summary

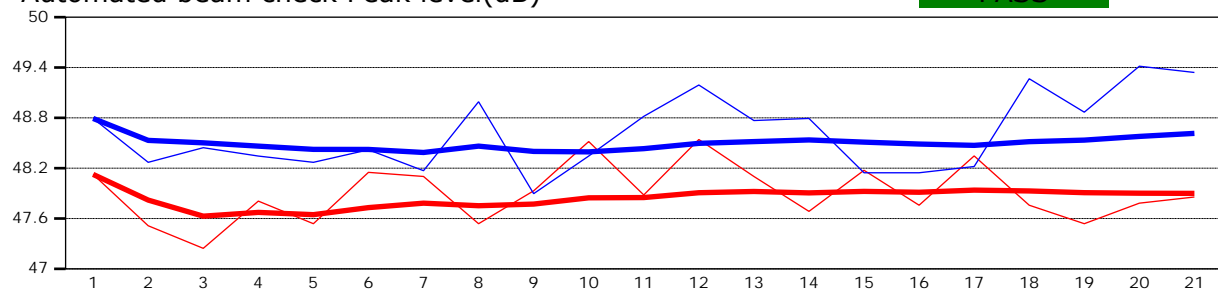
Site name ECanal5
Site number 02
Operator(s) VAllen
File name EastCanal_20230518_1431.ft
Comment

Beam 1	
Beam 2	

Automated beam check Start time 5/18/2023 2:31:05 PM

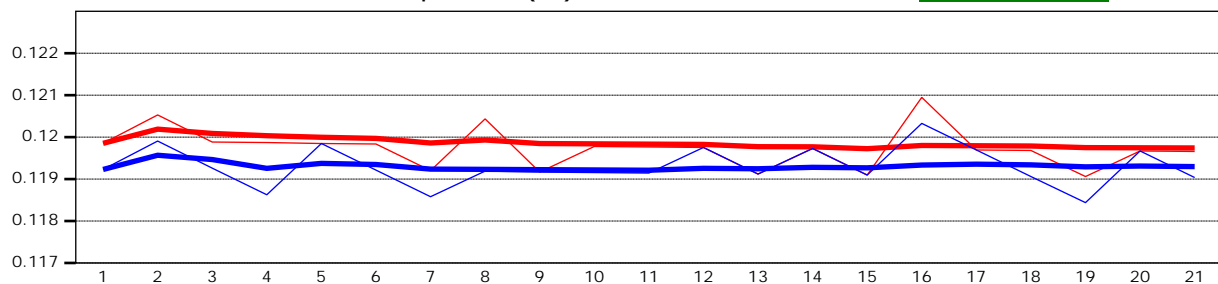
Automated beam check Peak level(dB)

PASS



Automated beam check Peak position(m)

PASS



Automated beam check Quality control warnings

No quality control warnings